



Machine wash, max 60°C, normal process. Do not bleach.
Tumble drying, normal temperature (max 80°C).
Iron, max 200°C. Do not dryclean.

GB

310 thread count.
Fabric: 60% cotton, 40% lyocell

ES

Número de hilos: 310.
Tela: 60% algodón, 40% lyocell

PT

Número de fios: 310.
Tecido: 60% algodão, 40% liocel

中文

310 纱支
面料: 60%棉, 40%莱赛尔

繁中

310 織
布料: 60%棉, 40% 萊賽爾纖維

KR

310 TC(스레드카운트).
패브릭: 면 60%, 리오셀 40%

JP

糸密度310
布地: 綿 60%, リヨセル 40%

ID

310 thread count.
Kain: 60% katun, 40% lyocell

BM

310 kiraan benang.
Fabrik: 60% kapas, 40% lyocell

AR

310 فتلة خيط/بوصة.
قماش: قطن 60%, ليوسيل 40%

TH

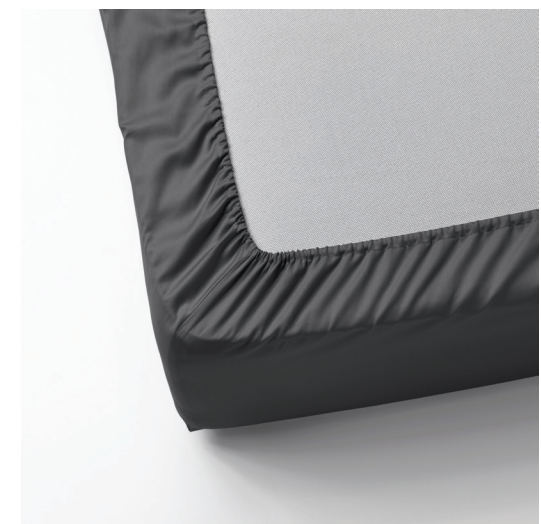
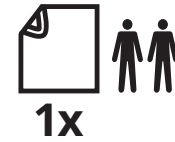
310 เส้นด้าย/ต.นิ้ว
ผ้า: ผ้าฝ้าย 60%, ไลโคเซล 40%

VN

310 sợi vải.
Vải: 60% cotton, 40% lyocell

NATTJASMIN

160x200x26cm
(63x79x10")



AA-2131733-2

© Inter IKEA Systems B.V. 2021

IKEA of Sweden AB
SE-343 81 Älmhult

IKEA
Design and Quality
IKEA of Sweden