



Machine wash, max 60°C, normal process. Do not bleach.  
Tumble drying, normal temperature (max 80°C).  
Iron, max 200°C. Do not dryclean.

GB

**310 thread count.**  
Fabric: 60% cotton, 40% lyocell

ES

**Número de hilos: 310.**  
Tela: 60% algodón, 40% lyocell

PT

**Número de fios: 310.**  
Tecido: 60% algodão, 40% liocel

中文

**310 纱支**  
面料: 60%棉, 40%莱赛尔

繁中

**310 織**  
布料: 60%棉, 40% 萊賽爾纖維

KR

**310 TC(스레드카운트).**  
패브릭: 면 60%, 리오셀 40%

JP

**糸密度310**  
布地: 綿 60%, リヨセル 40%

ID

**310 thread count.**  
Kain: 60% katun, 40% lyocell

BM

**310 kiraan benang.**  
Fabrik: 60% kapas, 40% lyocell

AR

**310 فتلة خيط/بوصة.**  
قماش: قطن 60%, ليوسيل 40%

TH

**310 เส้นด้าย/ต.นิ้ว**  
ผ้า: ฝ้าย 60%, ไลยเซล 40%

VN

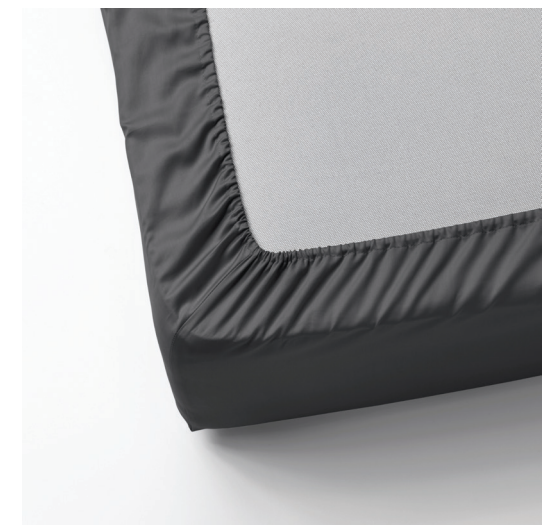
**310 sợi vải.**  
Vải: 60% cotton, 40% lyocell

# NATTJASMIN

120x200x26cm  
(47x79x10")



1x



AA-2131710-2

© Inter IKEA Systems B.V. 2021

IKEA of Sweden AB  
SE-343 81 Älmhult

**IKEA**  
Design and Quality  
IKEA of Sweden